

**TRANGO**

**S Y S T E M S**

**MODULAR TRAINING INFRASTRUCTURE**

**2024**

# MODERN DAY WARFARE

Imagine: a terrorist cell is controlling a house or an apartment. They have a hostage or hostages. The house is located in a populated area. There are other houses all around it. There are people on the streets, shops, cars...

A lot of training is required to mitigate the risks of collateral damage and to achieve the mission goals.

Now imagine that you can train combat units for this or similar missions using training aids that perfectly simulate urban environment: house or apartment floor plans, even furniture and accessories that mimic real-life settings. Add to this friends & foe models (targets) and urban-life accessories (garbage containers, trees, benches) and you get your **ultimate training set up**.



# PRODUCTS CATALOGUE

<b>A New Standard in Combat Training</b>	4
<b>Urban Tactical Training</b>	5
Shoot House Training Infrastructure	6
SWAT Street Combat Training Kits	12
CQB Tactical Training Kits	14
Subterranean Warfare Training Kits	16
Structure Components Kits	18
Modular Barricades	20
<b>Shooting Targets</b>	21
Target Range Accessories	22
Shooting Range Targets	23
Friend & Foe Targets (models)	24
Friend & Foe Outdoor Scenes (Kits)	29
Vehicle Targets	30
Functional Vehicles	34
<b>Household &amp; Outdoor Furniture Kits</b>	35
Living Room Kit	37
Kitchen Kit	38
Bedroom Kit	39
Home Office Kit	40
Bathroom Kit	41

# A NEW STANDARD IN COMBAT TRAINING

Custom-built & Kit-based solutions for creating **true-to-life** training environment to simulate a wide range of combat scenarios with emphasis on **urban and subterranean warfare**.

## PANEL-O-FOAM

All products are made of **PANELO™** - a patented composite manufactured exclusively for Trango Systems.

**Withstands Extreme weather conditions:** UV exposure, snow, extreme temperatures, and more;  
**Sustains >12,000 hits** w/ 5.56 mm



# MODULAR SOLUTIONS FOR TACTICAL COMBAT TRAINING



# SHOOT HOUSE TRAINING KITS

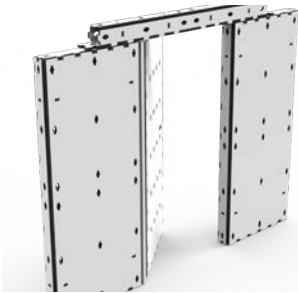
## COMPONENTS



WALL 200



WINDOW 200



DOOR PACKAGE



BEAM 200



PATCH



CORNER



J-HOOK



KLAMRA



SPIDER

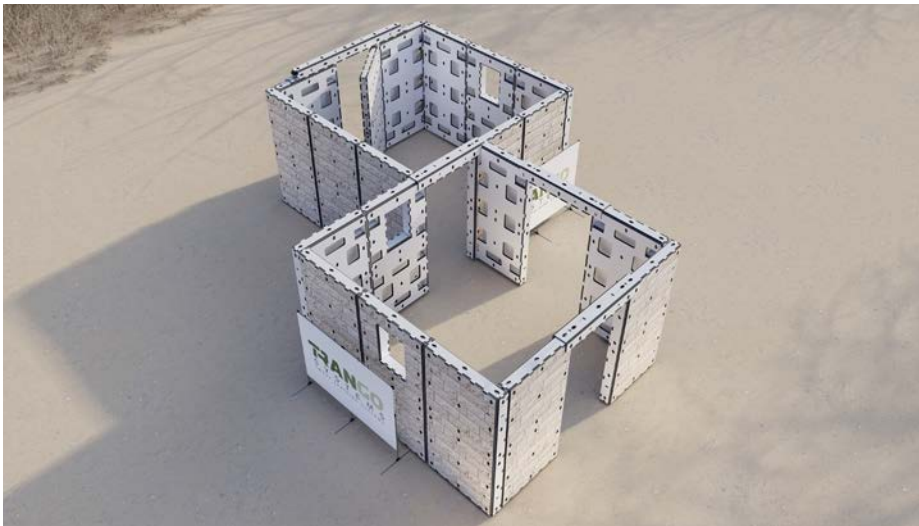


BEAM 100

All kits are available in grey color or brick texture



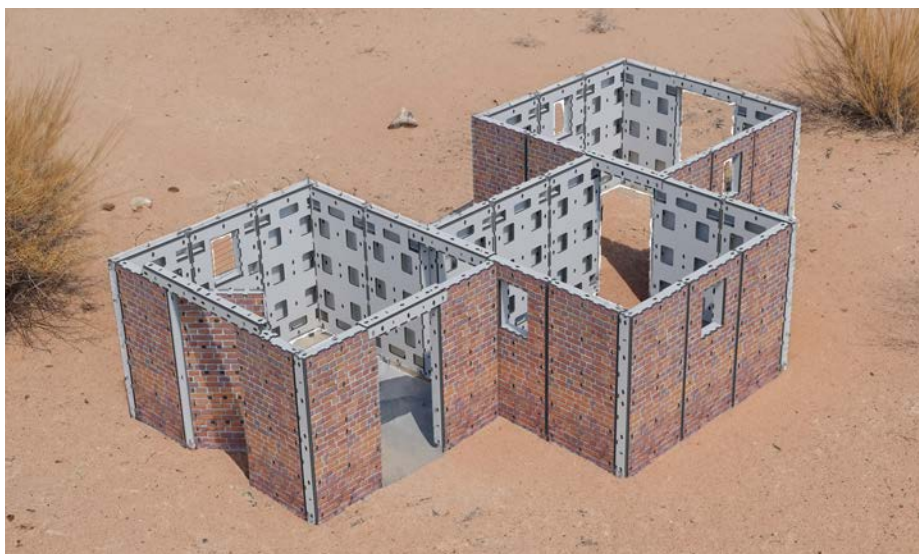
## SHOOT HOUSE | BASIC



Item	Amount
Wall 200	x16
Window 200	x3
Door	x1
Beam 100	x3
Beam 200	x1
Spider	x4
Corner	x4
J-Hook	x12
Klamra	x24
Patch	x8
Window Cover	x3
C/N Gray: TS515903	
C/N Printed: TS515904	
<b>Packages Supplied</b>	
Package 200	x3
Door Package	x1

**Floor-space:**  
23 m<sup>2</sup> | 247 ft<sup>2</sup>

# SHOOT HOUSE | ADVANCED



Item	Amount
Wall 200	x24
Window 200	x5
Door	x1
Beam 100	x5
Beam 200	x1
Spider	x6
Corner	x6
J-Hock	x18
Klamra	x36
Patch	x12
Window Cover	x5
C/N Gray: TS515905	
C/N Printed: TS515906	
<b>Packages Supplied</b>	
Package 200	x5
Door Package	x1

**Floor-space:**  
35 m<sup>2</sup> | 376 ft<sup>2</sup>

# SHOOT HOUSE | EXPERT | STAND-ALONE



Item	Amount
Wall 200	x36
Window 200	x6
Door	x3
Beam 100	x6
Beam 200	x3
Spider	x9
Corner	x9
J-Hock	x27
Klamra	x54
Patch	x18
Window Cover	x6

C/N Gray: TS515920

C/N Printed: TS515921

### Packages Supplied

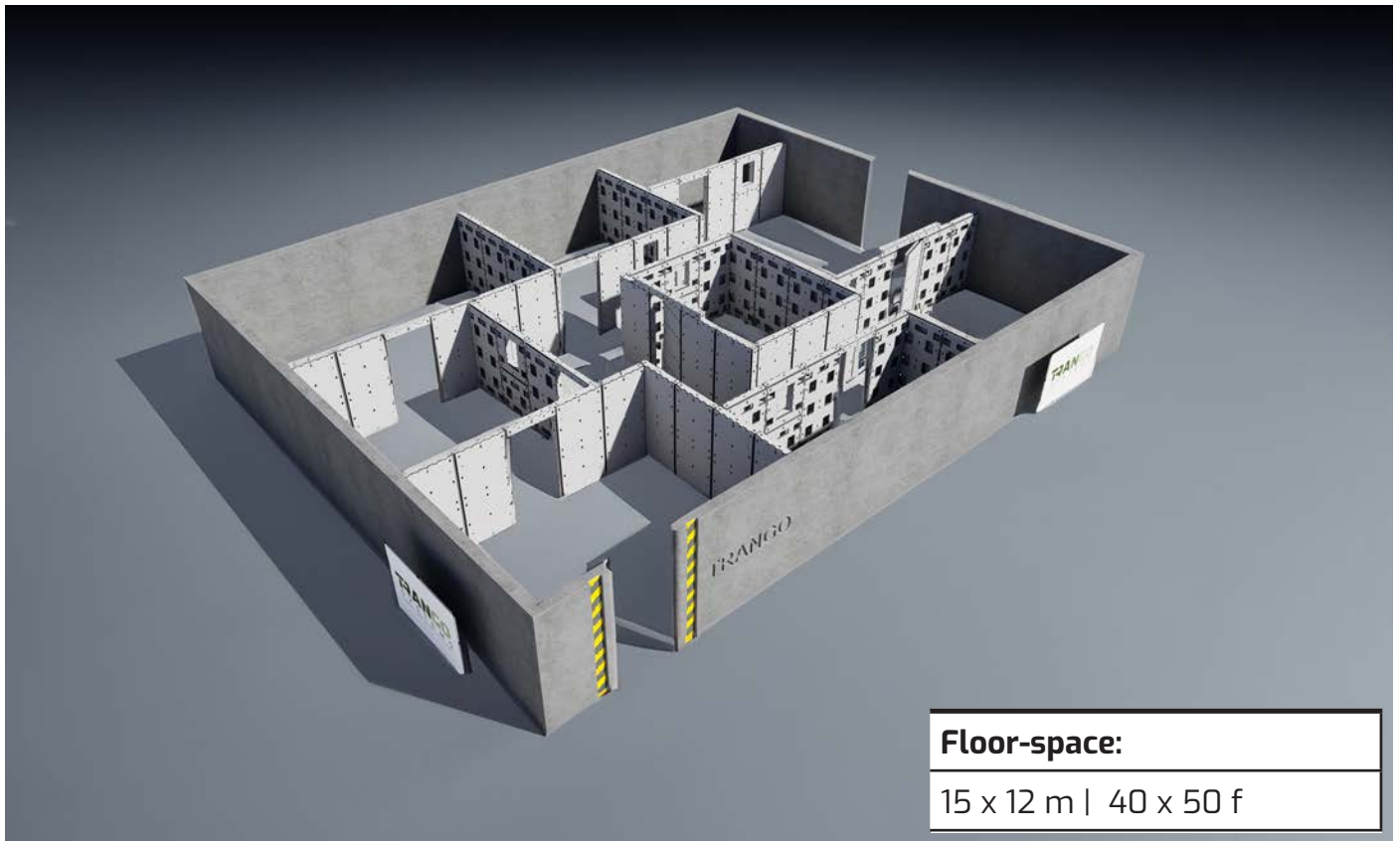
Package 200	x6
Door Package	x3

**Floor-space:**  
51 m<sup>2</sup> | 548 ft<sup>2</sup>



# SHOOT HOUSE | EXPERT | INTEGRATED

Trango's modular settings allow to integrate the structure elements into an existing frame or structure according to specific training goals and requirements, creating a larger structure from the same amount of building blocks.



# SHOOT HOUSE | PRO



Item	Amount
Wall 200	x52
Window 200	x8
Door	x5
Beam 100	x8
Beam 200	x5
Spider	x13
Corner	x13
J-Hock	x39
Klamra	x78
Patch	x26
Window Cover	x8
C/N Gray: T5515922	
C/N Printed: T5515923	

## Packages Supplied

Package 200	x8
Door Package	x5

**Floor-space:**  
73 m<sup>2</sup> | 785 ft<sup>2</sup>

# SHOOT HOUSE | PRO+



Item	Amount
Wall 200	x120
Window 200	x20
Door	x10
Beam 100	x20
Beam 200	x10
Spider	x30
Corner	x30
J-Hock	x90
Klamra	x180
Patch	x60
Window Cover	x20
C/N Gray: TS515924	
C/N Printed: TS515925	

## Packages Supplied

Package 200	x20
Door Package	x10

**Floor-space:**  
170 m<sup>2</sup> | 1830 ft<sup>2</sup>

# SWAT STREET COMBAT TRAINING

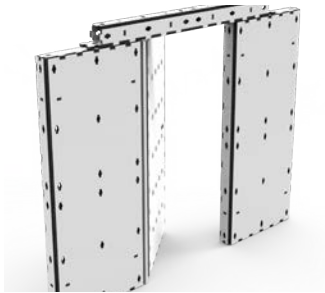
## COMPONENTS



WALL 200



WINDOW 200



DOOR PACKAGE



BEAM 200



PATCH



CORNER



J-HOOK



KLAMRA

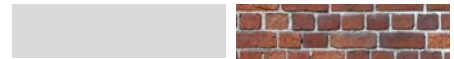


SPIDER

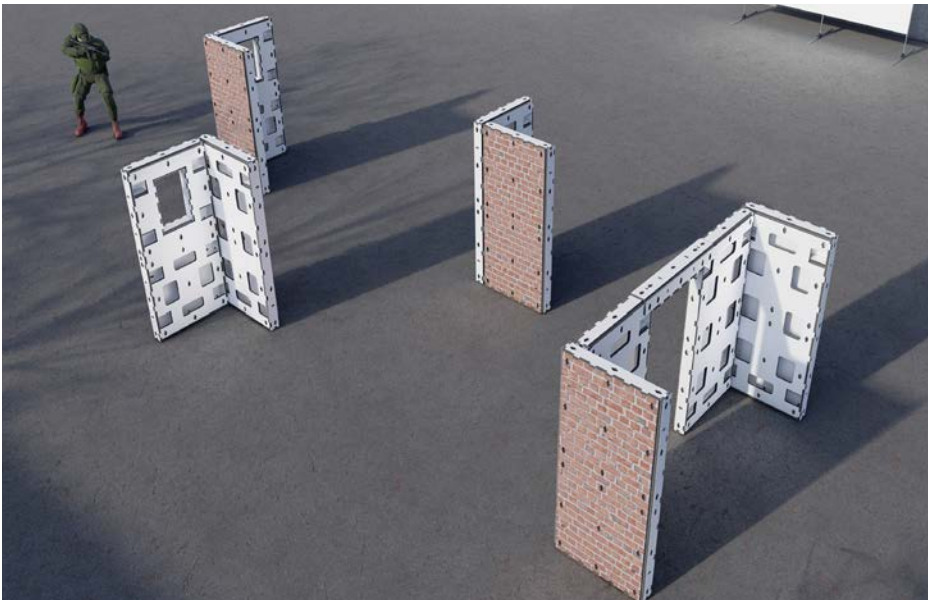


BEAM 100

All kits are available in grey color or brick texture

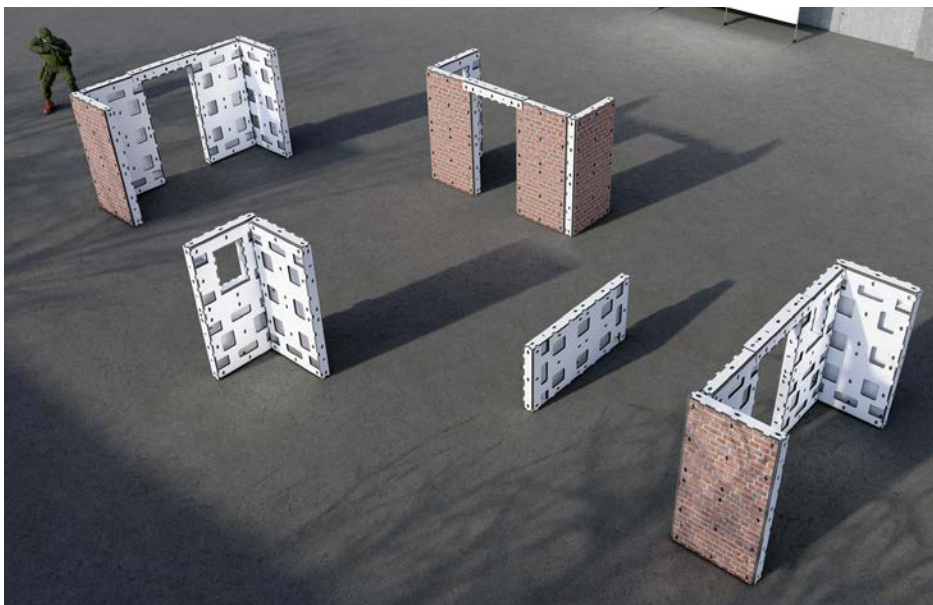


## SWAT STREET COMBAT TRAINING | BASIC KIT



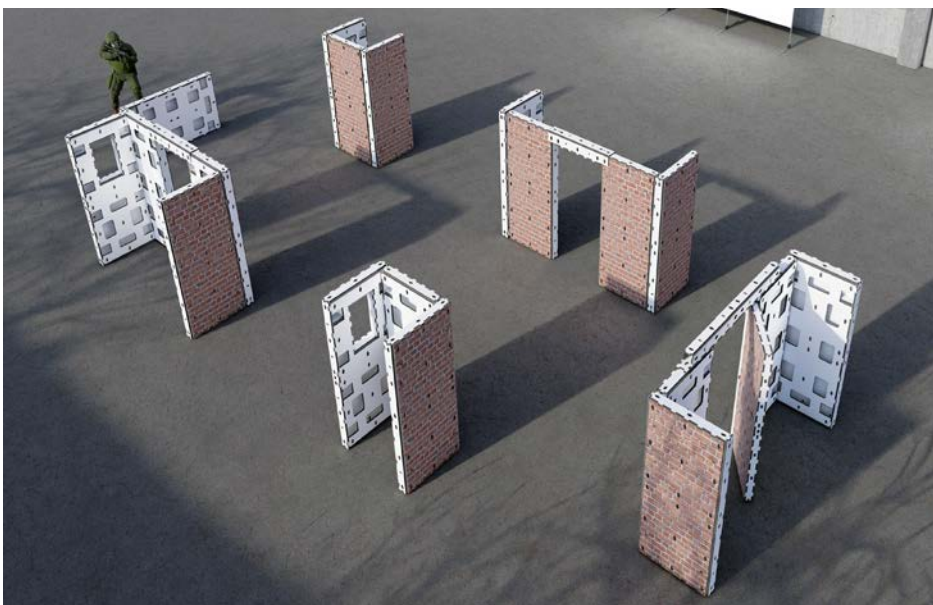
Item	Amount
Wall 200	x8
Window 200	x2
Beam 100	x2
Spider	x2
Corner	x2
J-Hook	x6
Klamra	x12
Patch	x4
Window Cover	x2
C/N Gray: TS515907	
C/N Printed: TS515908	
<b>Packages Supplied</b>	
Package 200	x2

## SWAT STREET COMBAT TRAINING | ADVANCED KIT



Item	Amount
Wall 200	x12
Window 200	x3
Beam 100	x3
Spider	x3
Corner	x3
J-Hook	x9
Klamra	x18
Patch	x6
Window Cover	x3
C/N Gray: TS515909	
C/N Printed: TS515910	
<b>Packages Supplied</b>	
Package 200	x3

## SWAT STREET COMBAT TRAINING | EXPERT KIT



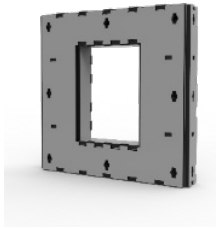
Item	Amount
Wall 200	x16
Window 200	x3
Beam 100	x3
Beam 200	x2
Door	x1
Spider	x4
Corner	x4
J-Hook	x12
Klamra	x24
Patch	x8
Window Cover	x3
C/N Gray: TS515911	
C/N Printed: TS515912	
<b>Packages Supplied</b>	
Package 200	x3
Door Package	x1

# CQB TACTICAL TRAINING KITS

## COMPONENTS



WALL 100



WINDOW 100



BARRICADE



CORNER



J-HOOK

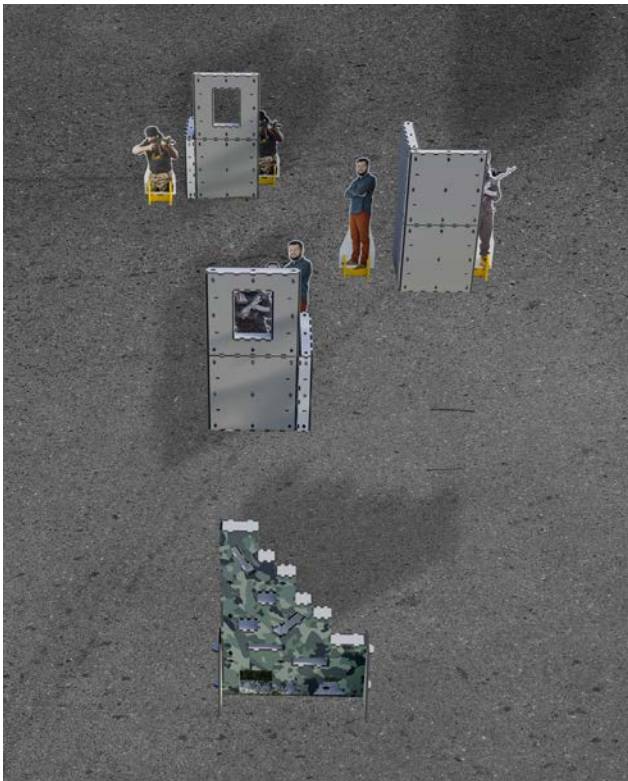


KLAMRA



SPIDER

## CQB TACTICAL TRAINING | BASIC KIT



Item	Amount
Wall 100	x8
Window 100	x2
Barricade	x1
Spider	x2
Corner	x2
J-Hook	x8
Klamra	x12
C/N Gray: TS515913	
C/N Printed: TS515914	
<b>Packages supplied:</b>	
Package 100	x2
Barricade	x1

## CQB TACTICAL TRAINING | ADVANCED KIT



Item	Amount
Wall 100	x12
Window 100	x3
Barricade	x1
Spider	x3
Corner	x3
J-Hook	x12
Klamra	x18
C/N Gray: TS515915	
C/N Printed: TS515916	
<b>Packages supplied:</b>	
Package 100	x3
Barricade	x1

## CQB TACTICAL TRAINING | EXPERT KIT



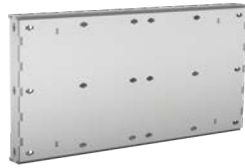
Item	Amount
Wall 100	x16
Window 100	x4
Barricade	x2
Spider	x4
Corner	x4
J-Hook	x16
Klamra	x24
C/N Gray: TS515917	
C/N Printed: TS515918	
<b>Packages supplied:</b>	
Package 100	x4
Barricade	x2

# SUBTERRANEAN WARFARE KITS

## COMPONENTS



TUNNEL WALL 200/50



TUNNEL WALL 200/100



TUNNEL WALL 100/50



TUNNEL WALL 100/100



M-COVER 100



COVER 200



F-COVER



2F-COVER



BOTTOM CLAMP



TOP CLAMP



CORNER



SPIDER

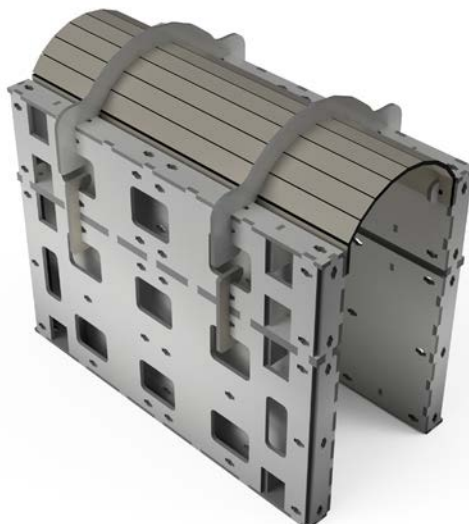


KLAMRA



BuNG

## TUNNEL 200



Item	Amount
Wall 200x50	2
Wall 200x100	2
M-Cover 200	1
Corner	2
Top Clamp	2
Bottom Clamp	4
Klamra	4
Spider	2

CN: 40000022040



# TUNNEL-T



Item	Amount
Wall 100x100	3
Wall 100x50	3
M-Cover 100	1
F-Cover 100	1
Corner	2
Top Clamp	2
Bottom Clamp	4
Klamra	4
Spider	2
CN: 40000023746	

# TUNNEL-L



Item	Amount
Wall 100x100	3
Wall 100x50	3
M-Cover 100	1
F-Cover 100	1
Corner	2
Top Clamp	2
Bottom Clamp	4
Klamra	4
Spider	2
Bung	1
CN: 40000022039	

# TUNNEL-X



Item	Amount
Wall 100x100	4
Wall 100x50	4
M-Cover 100	2
2F-Cover 100	1
Corner	2
Top Clamp	2
Bottom Clamp	4
Klamra	4
Spider	2
CN: 40000022092	

# STRUCTURE COMPONENTS KITS

## DOOR PACKAGE

CN: GRAY 4000024215 | PRINTED 40000024239



WALL 200 x 4



STABILITY  
PACKAGE x 1



BEAM 200 x 1



SPIDER x 1

## SEPARATE COMPONENTS



SPIDER

CN: 40000023925



WINDOW COVER

CN: 40000025068



CORE (TARGET MIKI)

CN: 40000020829



BARRI-LEG

CN: 40040001040

## STABILITY PACKAGE

CN: 40000024218



CORNER x1



J-HOOK x3



KLAMRA x6



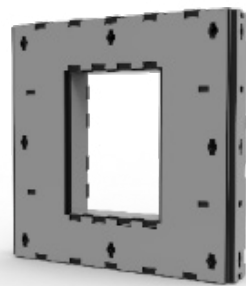
PATCH x2

## PACKAGE 100

CN: GRAY 40000024216 | PRINTED 40000024237



WALL 100 x 4



WINDOW 100 x 1



STABILITY PACKAGE x 1



SPIDER x 1

## PACKAGE 200

CN: GRAY 40000024214 | PRINTED 40000024238



WALL 200 x 4



WINDOW 200 x 1



STABILITY PACKAGE x 1



BEAM 100 x 1



SPIDER x 1



WINDOW COVER x1

# MODULAR BARRICADES

Supplied with two Barri-Legs



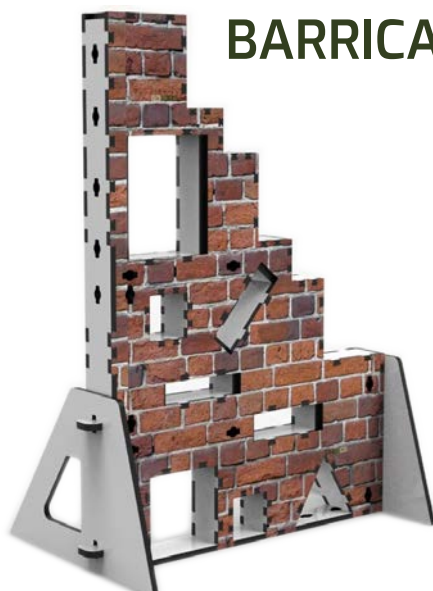
**BARRICADE 1**

CN: 40000023486

DIMENSIONS WxLxH	WEIGHT
120x180x15 cm 48x72x6 inch	14 kg 30 lb

Supports various weapon placements and shooting positions while engaging targets using different hole patterns.

Supplied with two legs (Barri-leg). The Barri-legs may also be ordered separately, as well (see p. 18).



**BARRICADE 2**

CN: 40000023867



**BARRICADE 3**

CN: 40000023865

# SHOOTING TARGETS



# TARGET RANGE ACCESSORIES

## IMPORTANT!

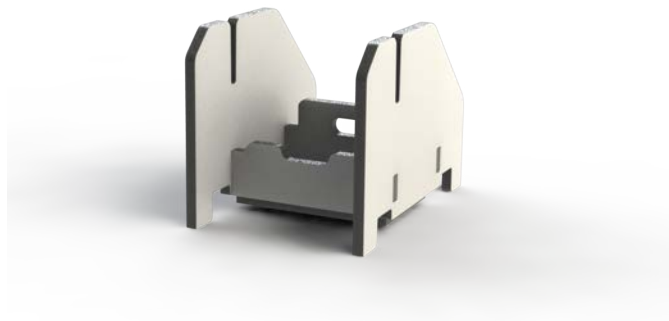
All targets and target stands are supplied in a **bundle of five**, unless indicated otherwise.

All targets are supplied without stands, unless indicated otherwise. The stands need to be ordered separately.

The above applies to both shooting range and Friend & Foe targets.

Product details are provided for one unit. Information on packages (bundles) is available in an accompanying document.

## TARGET STAND



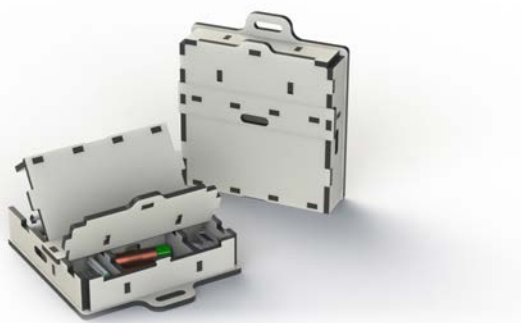
DIMENSIONS	WEIGHT
38x35x50 cm 15x13x19 inch	1.2 kg 3 lb
CN: 40020002285	

## INDOORS STAND



DIMENSIONS	WEIGHT
60x120x50 cm 24x47.2x19.6 inch	2 kg 4 lb
CN: 40000021184	

## SERGEANT BOX



DIMENSIONS	WEIGHT
68x60x15 cm 26x23x6 inch	2.5 kg 6 lb
CN: 40000024160	

## RANGE CART



DIMENSIONS	WEIGHT
100x40x60 cm 39x15.7x23.6 inch	14 kg 30.8 lb
CN: 40000021011	

# SHOOTING RANGE TARGETS

## TARGET BACKER RANGE



### DIMENSIONS WxH

50x129 cm  
20x47 inch

### WEIGHT

2.2 kg  
5 lb

CN: 40010003461

## TARGET BACKER MIKI



### DIMENSIONS WxH

50x145 cm  
20x57.1 inch

### WEIGHT

2.8 kg  
6 lb

CN: 40000020828

Cores needs to be ordered separately.

## TARGET BACKER NICOLE



### DIMENSIONS WxH

50x129 cm  
20x47 inch

### WEIGHT

2.2 kg  
5 lb

CN: 40000021891



### CORE FOR TARGET MIKI (X10)

CN: 40000020828

## FIELD TARGET



### DIMENSIONS WxH

50x65 cm  
19.6x25.6 inch

### WEIGHT

1.2 kg  
3 lb

CN: 40000023591

Supplied with built-in stand

# FRIEND & FOE TARGETS

All the Friend & Foe targets are provided in bundles of 5. Each bundle contains either armed or unarmed target models.

Stands need to be ordered separately.

See the attached Products Details document for information on total package dimensions and weight.

Single target's dimensions and weight:

DIMENSIONS WxH	WEIGHT
50x170/180 cm	2 kg
20x66.9/70.8 inch	4.4 lb





---

## FRIEND & FOE | UNARMED TARGETS | KIT A



to order quote the Catalogue Number | **CN: 40000026935**

---

## FRIEND & FOE | UNARMED TARGETS | KIT B



to order quote the Catalogue Number | **CN: 40000026936**

---

## FRIEND & FOE | ARMED TARGETS | KIT C



to order quote the Catalogue Number | **CN: 40000026937**

---

## FRIEND & FOE | ARMED TARGETS | KIT D



to order quote the Catalogue Number | **CN: 40000026938**

---

## FRIEND & FOE | UNARMED TARGETS | KIT E



to order quote the Catalogue Number | **CN: 40000026939**

---

## FRIEND & FOE | ARMED | KIT F



to order quote the Catalogue Number | **CN: 40000026940**

# FRIEND & FOE | ARMED TARGETS | KIT G



to order quote the Catalogue Number | **CN: 40000026941**



## FRIEND & FOE | SCENES | KIT 1



to order quote the Catalogue Number | **CN: 4000026606**

## FRIEND & FOE | SCENES | KIT 2



to order quote the Catalogue Number | **CN: 4000026607**

# VEHICLE TARGETS

Supplied with 2 stands

## TRANGO VEHICLE TARGET | MODEL A



### DIMENSIONS WxH

254.7x122.7 cm  
100.3x48.3 inch

### WEIGHT

8 kg  
18 lb

CN: 40000023868

## TRANGO VEHICLE TARGET | MODEL B



### DIMENSIONS WxH

352.3x122.6 cm  
138.7x48.3 inch

### WEIGHT

8 kg  
18 lb

CN: 40000024171

## TRANGO VEHICLE TARGET | MODEL C



### DIMENSIONS WxH

325.1x121.8 cm  
128x47.9 inch

### WEIGHT

8 kg  
18 lb

CN: 40000023869

## TRANGO VEHICLE TARGET | MODEL D



### DIMENSIONS WxH

203x110 cm  
79.9x43 inch

### WEIGHT

8 kg  
18 lb

CN: 40000023870

## TRANGO VEHICLE TARGET | MODEL E



### DIMENSIONS WxH

283.1x120.7 cm  
111.4x47.5 inch

### WEIGHT

8 kg  
18 lb

CN: 40000019546

## TRANGO VEHICLE TARGET | MODEL F



### DIMENSIONS WxH

317.1x114 cm  
79.9x43 inch

### WEIGHT

8 kg  
18 lb

CN: 40000023950

# SINGLE MOTORCYCLE



## DIMENSIONS WxH

340x120 cm  
133.8x47 inch

## WEIGHT

5 kg  
11 lb

CN: 40000024151

\*One board and one stand

# MOTORCYCLES



## DIMENSIONS WxH

1700x120 cm  
669x47 inch

## WEIGHT

10 kg  
22.05 lb

CN: 40000023968

\*Two boards and two stands





# FUNCTIONAL VEHICLES



## RED CAR - M1

### DIMENSIONS WxLxH

470x155x160 cm  
185x61x63 inch

### WEIGHT

80 kg  
176.4 lb

CN: 40000023734



## BLUE CAR - M2

### DIMENSIONS WxLxH

380x155x140 cm  
150x61x55 inch

### WEIGHT

60 kg  
132.3 lb

CN: 40000021538



## WHITE CAR - M3

### DIMENSIONS WxLxH

470x155x160 cm  
185x61x63 inch

### WEIGHT

80 kg  
176.4 lb

CN: 40000023728

# HOUSEHOLD & OUTDOOR FURNITURE KITS



# HOUSEHOLD & OUTDOOR

## FURNITURE AND ACCESSORIES

All household and outdoor items are arranged into kits according to standard rooms or house spaces. Each kit is packed in one box with fixed weight and dimensions, for your convenience.

### Available kits:

Living Room Kit

Kitchen Kit

Bedroom Kit

Home Office Kit

Bathroom Kit

Outdoor Kit

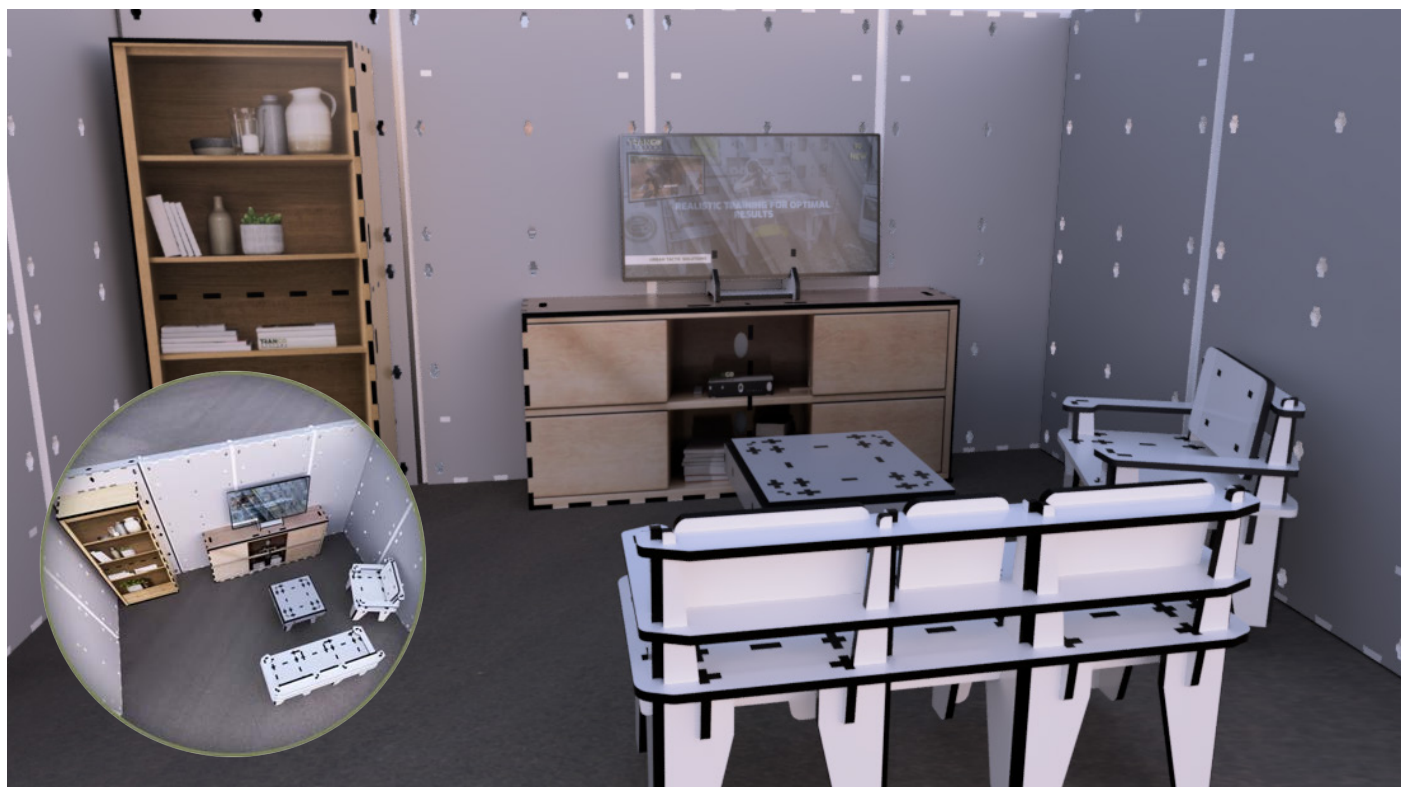
### Kits' Dimensions:

2,220/1,220/12-15 cm

72.83/40.03/0.4-0.5 feet



# HOUSEHOLD | LIVING ROOM KIT



to order quote the Catalogue Number | **CN: 4000025935**

## Kit Components:

Bookcase 2 | x1



**Dimensions:**  
80x35x180 cm  
31x13.7x70.8 inch  
**Weight:** 12 kg | 26 lb

TV Cabinet | x1



**Dimensions:**  
80x35x180 cm  
31x13.7x70.8 inch  
**Weight:** 12 kg | 26 lb

Couch | x1



**Dimensions:**  
50x50x85 cm  
19.6x19.6x33 inch  
**Weight:** 7.6 kg | 16.8 lb

Coffee Table | x1



**Dimensions:**  
60x60x55 cm  
23x23x2 inch  
**Weight:** 3.5 kg | 7 lb

Armchair | x2



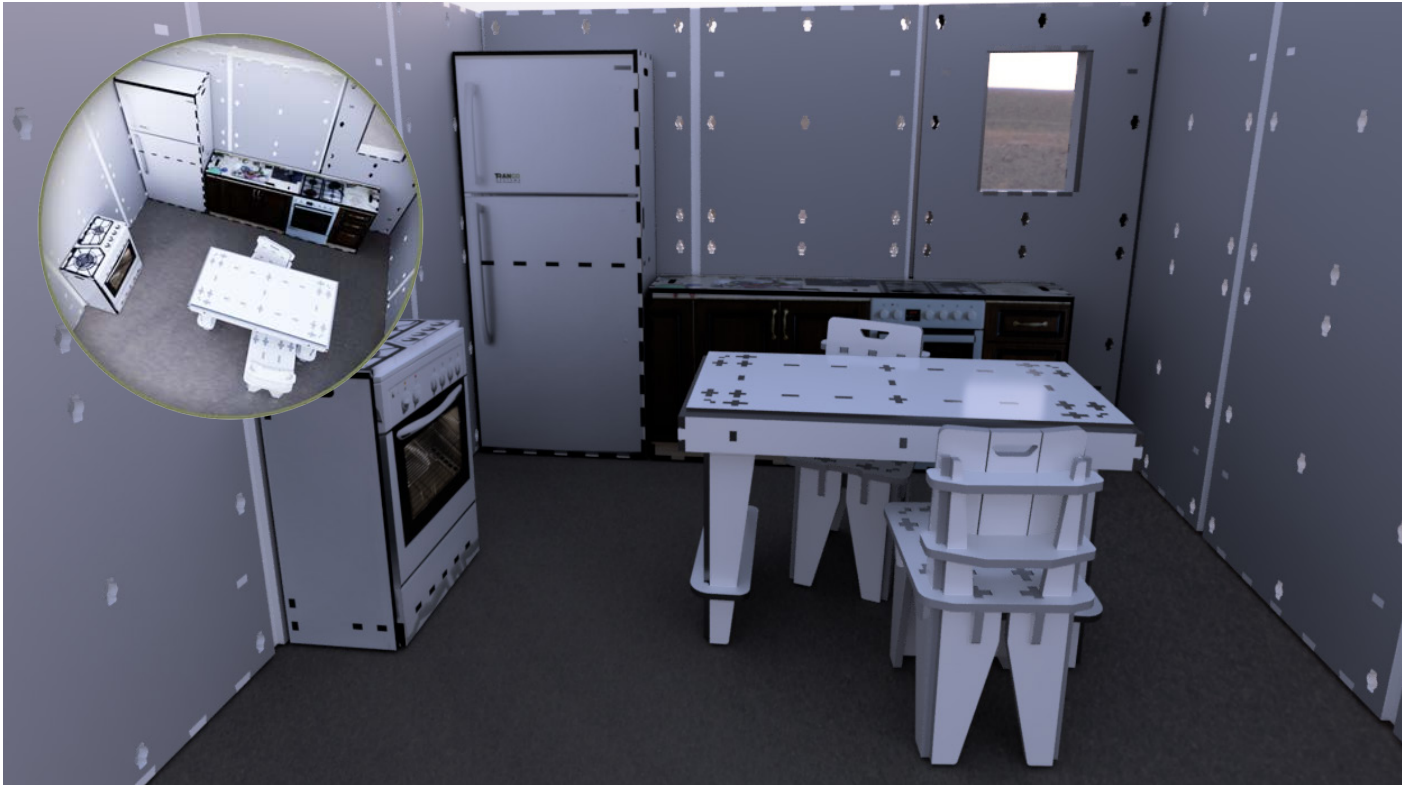
**Dimensions:**  
55x68.3x51 cm  
21.7x26.9x20.1 inch  
**Weight:** 5.5 kg | 12 lb

TV Screen | x1



**Dimensions:**  
60x110 cm  
24x44 inch  
**Weight:** 1.25 kg | 3 lb

# HOUSEHOLD | KITCHEN KIT



to order quote the Catalogue Number | **CN: 4000025936**

## Kit Components:

### Large Fridge | x1



**Dimensions:**  
80x35x180 cm  
31x13.7x70.8 inch  
**Weight:** 12 kg | 26 lb

### Countertop | x1



**Dimensions:**  
80x35x180 cm  
31x13.7x70.8 inch  
**Weight:** 12 kg | 26 lb

### Oven | x1



**Dimensions:**  
60x35x85 cm  
23,6x13,7x33 inch  
**Weight:** 5 kg | 11 lb

### Large Table | x1



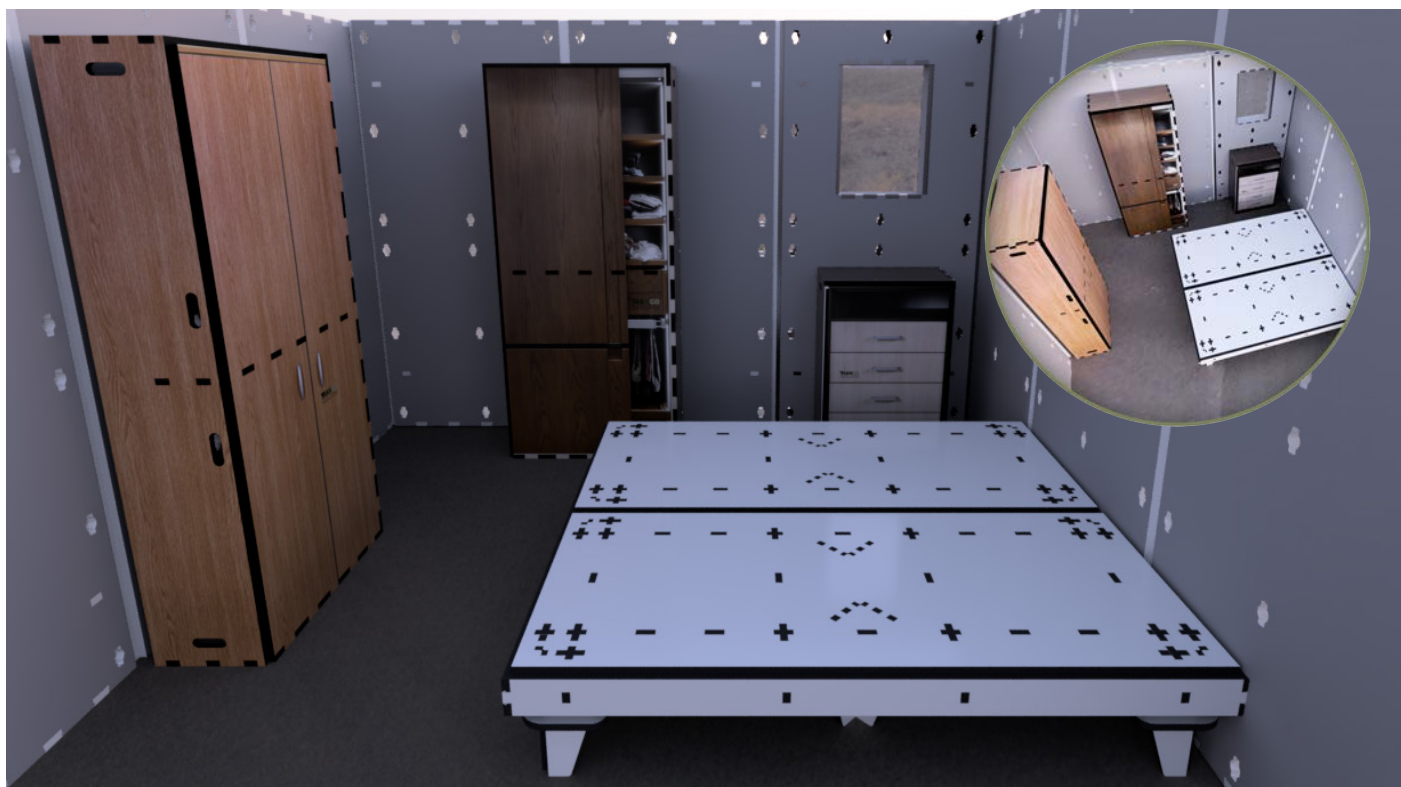
**Dimensions:**  
120x60x57 cm  
47x23x22 inch  
**Weight:** 6 kg | 14 lb

### Chairs | x2



**Dimensions:**  
50x50x85 cm  
19.6x19.6x33 inch  
**Weight:** 4 kg | 8 lb

## HOUSEHOLD | **BEDROOM KIT**



to order quote the Catalogue Number | **CN: 40000025937**

### Kit Components:

Cupboard 1 | x1



**Dimensions:**

80x35x180 cm

31x13.7x70.8 inch

**Weight:** 12 kg | 26 lb

Cupboard 2 | x1



**Dimensions:**

80x35x180 cm

31x13.7x70.8 inch

**Weight:** 12 kg | 26 lb

Dresser | x1



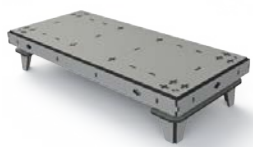
**Dimensions:**

60x35x85 cm

23,6x13,7x33 inch

**Weight:** 5 kg | 11 lb

Single bed | x2



**Dimensions:**

180x80x35 cm

70x31x13 inch

**Weight:** 8 kg | 18 lb

# HOUSEHOLD | HOME OFFICE KIT



to order quote the Catalogue Number | **CN: 4000025938**

## Kit Components:

Desk | x1



**Dimensions:**  
120x60x57 cm  
47x23x22 inch  
**Weight:** 6 kg | 14 lb

Chairs | x2



**Dimensions:**  
50x50x85 cm  
19.6x19.6x33 inch  
**Weight:** 4 kg | 8 lb

PC Screen | x1



**Dimensions:**  
30x40 cm  
12x16 inch  
**Weight:** 0.5 kg | 1 lb

Bookcase 1 | x1



**Dimensions:**  
80x35x180 cm  
31x13.7x70.8 inch  
**Weight:** 12 kg | 26 lb

Bookcase 2 | x1



**Dimensions:**  
80x35x180 cm  
31x13.7x70.8 inch  
**Weight:** 12 kg | 26 lb

Dresser | x1



**Dimensions:**  
60x35x85 cm  
23,6x13,7x33 inch  
**Weight:** 5 kg | 11 lb



# HOUSEHOLD | BATHROOM KIT



to order quote the Catalogue Number | **CN: 40000025939**

## Kit Components:

Shower Cubicle | x1



**Dimensions:**  
80x35x180 cm  
31x13.7x70.8 inch  
**Weight:** 12 kg | 26 lb

Washing Machine | x1



**Dimensions:**  
60x35x85 cm  
23,6x13,7x33 inch  
**Weight:** 5 kg | 11 lb

Dryer | x1



**Dimensions:**  
60x35x85 cm  
23,6x13,7x33 inch  
**Weight:** 5 kg | 11 lb

Sink | x1



**Dimensions:**  
60x35x85 cm  
23,6x13,7x33 inch  
**Weight:** 5 kg | 11 lb

Milk Boxes | x1



**Dimensions:**  
60x35x85 cm  
23,6x13,7x33 inch  
**Weight:** 5 kg | 11 lb

Counter | x1



**Dimensions:**  
60x35x85 cm  
23,6x13,7x33 inch  
**Weight:** 5 kg | 11 lb

Toilet | x1




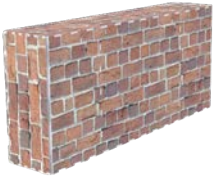




**Dimensions:**  
35x52x49.5 cm  
13.8x20.7x19.5 inch  
**Weight:** 1.5 kg | 3.3 lb

# HOUSEHOLD | OUTDOOR KIT



to order quote the Catalogue Number | **CN: 4000025940**

## Kit Components:

<p><b>Cable Box   x1</b></p>  <p><b>Dimensions:</b> 60x35x85 cm 23,6x13,7x33 inch <b>Weight:</b> 5 kg   11 lb</p>	<p><b>Gas   x1</b></p>  <p><b>Dimensions:</b> 60x35x85 cm 23,6x13,7x33 inch <b>Weight:</b> 5 kg   11 lb</p>	<p><b>Brick Wall   x1</b></p>  <p><b>Dimensions:</b> 80x35x180 cm 31x13.7x70.8 inch <b>Weight:</b> 12 kg   26 lb</p>	<p><b>Bottles Cooler   x1</b></p>  <p><b>Dimensions:</b> 80x35x180 cm 31x13.7x70.8 inch <b>Weight:</b> 12 kg   26 lb</p>
<p><b>Trash Can   x1</b></p>  <p><b>Dimensions:</b> 50x100 cm 19.6x39 inch <b>Weight:</b> 1 kg   2 lb</p>	<p><b>Large Bush   x1</b></p>  <p><b>Dimensions:</b> 30x120 cm 12x48 inch <b>Weight:</b> 2 kg   5 lb</p>	<p><b>Coffee Table   x1</b></p>  <p><b>Dimensions:</b> 60x60x55 cm 23x23x2 inch <b>Weight:</b> 3.5 kg   7 lb</p>	<p><b>Stools   x2</b></p>  <p><b>Dimensions:</b> 60x60x55 cm 23x23x2 inch <b>Weight:</b> 3.5 kg   7 lb</p>



**ULTIMATE SETUP FOR TACTICAL COMBAT TRAINING  
IN URBAN ENVIRONMENT  
MODULAR - REALISTIC - FLEXIBLE**



# TRANGO

S Y S T E M S

REALISTIC ENVIRONMENT FOR

## SMART COMBAT TRAINING

Trango's mission is to provide **efficient training environment** to prepare combatants for the challenges of the real battlefield by simulating operational settings of the present-day warfare.

**TRANGO: train to avoid collateral damage and achieve mission goals.**

### THE FOUNDERS

**Hagai Mordechai | Brig. Gen. (ret.)**

Division Commander, combat experience in major campaigns, Paratroopers Brigade commander, Head of IDF Tactical Commander Academy

**Eitan Ben Gad | Lt. Col. (ret.)**

Senior commander at Elite Combat units, COO at Paratroopers Brigade & IDF Central Command, IDF Counter-Terrorism Academy



[www.trango-sys.com](http://www.trango-sys.com)  
[info@trango-sys.com](mailto:info@trango-sys.com)

#### DISCLAIMER

This document was prepared to provide information and does not constitute a contract. Trango Systems reserves the right to change, supplement, or otherwise alternate at any time the information and offerings contained in this document without prior notice. Trango Systems shall not be liable for any loss or damage, whether direct or indirect, that may arise as a result of any third party relying on the information included in this document.

For further details, information, prices, and other questions, please contact Trango Systems at [info@trango-sys.com](mailto:info@trango-sys.com)